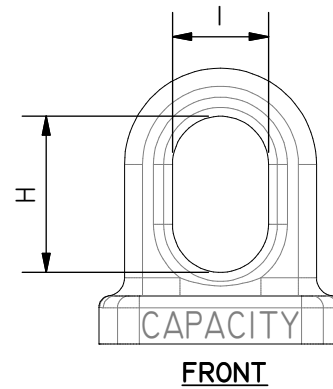
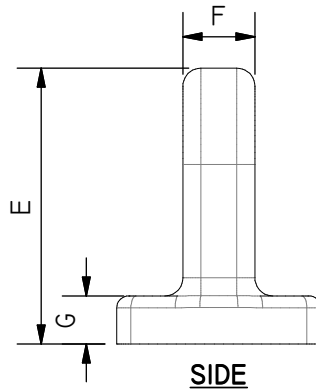
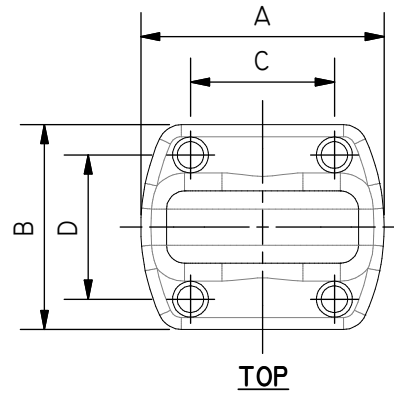


# CAST LIFT LUGS



## CL-XX

ALL MATERIALS, COMPONENTS AND WORKMANSHIP EXCEEDS THE CURRENT ASME B30.20 & BTH-I STANDARDS.

WORKING LOAD LIMIT	STOCK No.	WEIGHT EACH (LBS.)	DIMENSIONS (IN.)									BOLT Ø (IN.)
			A	B	C	D	E	F	G	H	I	
5T	CL-5	12.05	5.80	4.65	3.00	3.00	6.50	1.50	1.00	4.00	2.50	0.50
10T**	CL-10	26.00	8.00	6.00	6.00	4.00	7.00	2.00	1.38	4.00	2.50	0.75
20T*	CL-20	62.55	10.13	7.50	5.00	5.00	12.06	2.25	1.50	7.00	3.50	0.75
50T*	CL-50	142.36	13.50	9.00	7.00	6.00	18.25	2.75	2.00	12.00	6.00	1.00

WORKING LOAD LIMIT	STOCK No.	WEIGHT EACH (KGS.)	DIMENSIONS (MM)									BOLT Ø (MM EQUIV.)
			A	B	C	D	E	F	G	H	I	
5T	CL-5	5.47	147.2	118.2	76.2	76.2	164.8	38.1	25.4	101.6	63.5	M12.0-1.75
10T**	CL-10	11.80	203.2	152.4	152.4	101.6	177.8	50.8	35.1	101.6	63.5	M20.0-2.50
20T*	CL-20	28.38	257.4	190.5	127.0	127.0	306.4	57.2	38.1	177.8	88.9	M20.0-2.50
50T*	CL-50	64.59	343.6	228.6	177.8	152.4	463.6	69.9	50.8	304.8	152.4	N/A

\* MANUFACTURED UPON ORDER CONFIRMATION.

\*\* BASE SHAPE DIFFERS SLIGHTLY FROM IMAGES SHOWN.